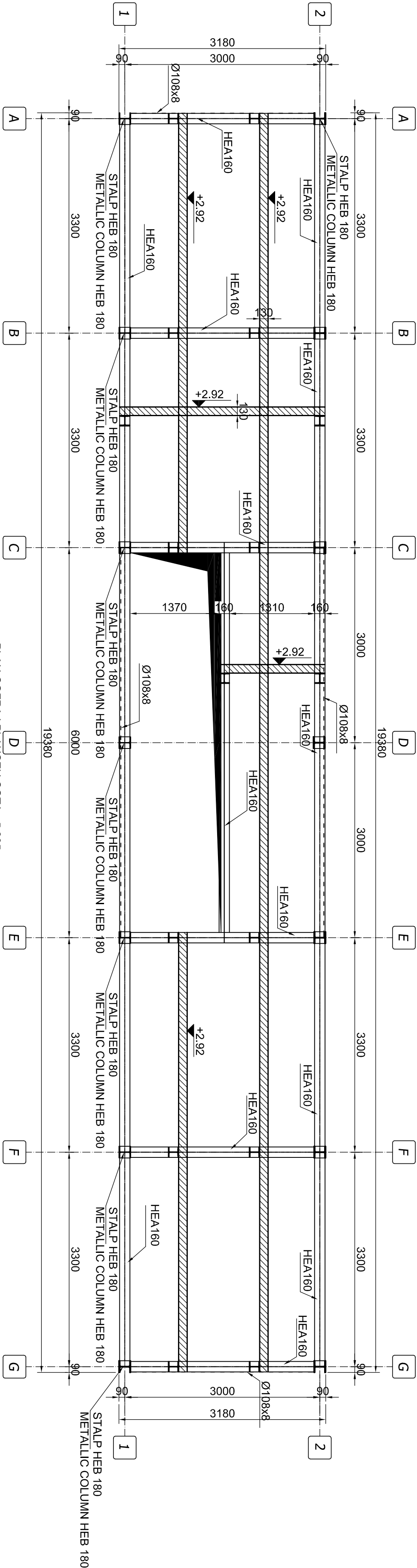
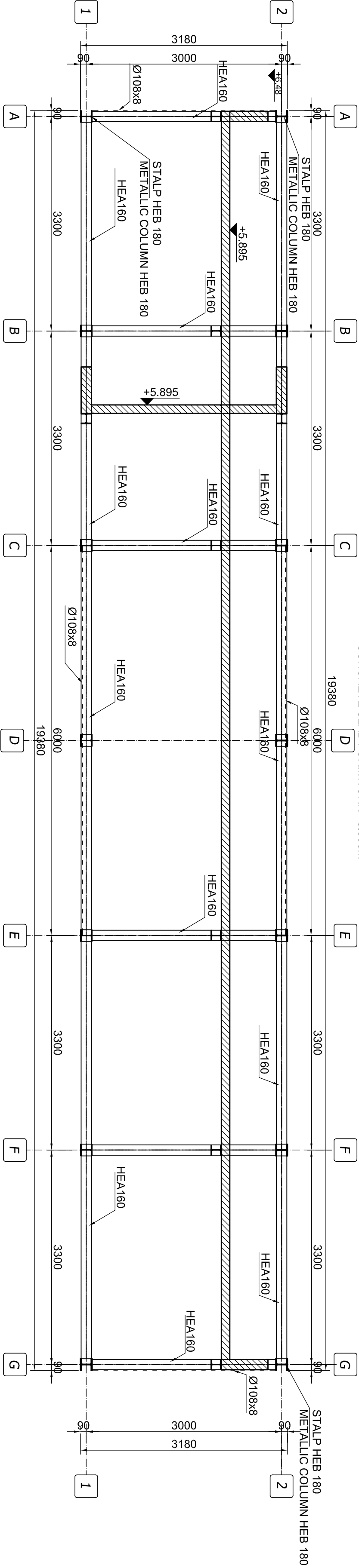


PLAN COFRAJ PLANSEU COTA +2.92m
CONCRETE SLAB FORMWORK +2.92m



PLAN COFRAJ PLANSEU COTA +5.895m
CONCRETE SLAB FORMWORK +5.895m



NOTA :
1. Toate piesele in contact se vor suda
continuu grosimea sudurii
fiind de 0,7t (unde t=grosimea celei mai subtiri
piese).
2. Pieseale metalice se vor proteja prin grunduire si
vopsire.
3. Sudurile vor avea clasa de calitate II.

NOTE :
1.All linker items will be continuously welded,while
the thickness
is maintained at 0,7t (t=the thinnest item's
thickness).
2.Metallic items will be protected by grounding and
painting.
3.The junctures will have second-th class quality.

MATERIALE :
LAMINATE : OL 37 - 3K
 OL T45 - 3K
Electrozi : BAZICI
Armaturi : PC52, OB37
Beton armat : C16/20
Beton de egalizare:C4/5
Ciment : CEM I/IIA-M32,5R
Acoperirea armaturii: 3.5cm
MATERIALS :
ROLLED STEEL : OL 37 - 3K
 OL T45 - 3K
Electrode type : BAZICI
Reinforcement : PC52, OB37
Reinforced Concrete:C16/20
Equalization concrete:C4/5
Cement : CEM I/IIA-M32,5R
Reinforcement cover:3.5cm

CLASA DE IMPORTANTA A CONSTRUCTIEI CONFORM P100/92 ESTE II
CATEGORIA DE IMPORTANTA CONFORM HG nr. 766/97 este (B)

THE CONSTRUCTION IMPORTANCE CLASS, ACCORDING TO P 100/92, IS II
THE IMPORTANCE CATEGORY, ACCORDING TO HG 766/97 IS "B"
